

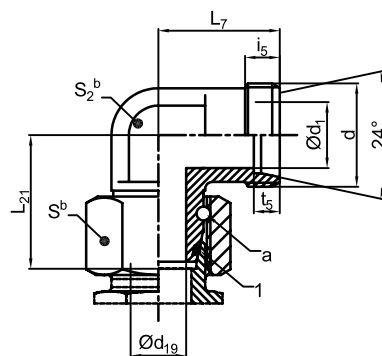
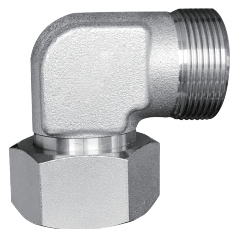
**ISO 8434-1-2008 SWOE**

Blago: EEDL / EEDS

Parker: EW Swivel nut elbow -EO 24° cone end / EO 24° DKO swivel

Eaton: 2C9-90° metric male 24° L.T. / 2D9-90° metric male 24° H.T.

Brennan: EWVD-MBT-FMS 90 DEG



ACEI item.#	Thread d	t5 +0.3 0	d1 ref.	d19 min.	L21 ±0.5	L7 ±0.3	i5 min.	S2 Forged connector min.	S
HU3ELI8434-1SWOEL06	M12X1.5	7	4	2.5	26	19	7	12	14
HU3ELI8434-1SWOEL08	M14X1.5	7	6	4	27.5	21	7	12	17
HU3ELI8434-1SWOEL10	M16X1.5	7	8	6	29	22	8	14	19
HU3ELI8434-1SWOEL12	M18X1.5	7	10	8	29.5	24	8	17	22
HU3ELI8434-1SWOEL15	M22X1.5	7	12	10	32.5	28	9	19	27
HU3ELI8434-1SWOEL18	M26X1.5	7.5	15	13	35.5	31	9	24	32
HU3ELI8434-1SWOEL22	M30X2.0	7.5	19	17	38.5	35	10	27	36
HU3ELI8434-1SWOEL28	M36X2.0	7.5	24	22	41.5	38	10	36	41 <sup>a</sup>
HU3ELI8434-1SWOEL35	M45X2.0	10.5	30	28	51	45	12	41	50
HU3ELI8434-1SWOEL42	M52X2.0	11	36	34	56	51	12	50	60
HU3ELI8434-1SWOES06	M14X1.5	7	4	2.5	27	23	9	12	17
HU3ELI8434-1SWOES08	M16X1.5	7	5	4	27.5	24	9	14	19
HU3ELI8434-1SWOES10	M18X1.5	7.5	7	6	30	25	9	17	22
HU3ELI8434-1SWOES12	M20X1.5	7.5	8	8	31	29	9	17	24
HU3ELI8434-1SWOES16	M24X1.5	8.5	12	11	36.5	33	11	24	30
HU3ELI8434-1SWOES20	M30X2.0	10.5	16	14	44.5	37	12	27	36
HU3ELI8434-1SWOES25	M36X2.0	12	20	18	50	42	14	36	46
HU3ELI8434-1SWOES30	M42X2.0	13.5	25	23	55	49	16	41	50
HU3ELI8434-1SWOES38	M52X2.0	16	32	30	63	57	18	50	60

KEY

1 O-ring

a Method of swivel nut attachment is at the option of the manufacturer.

b Width across flats.